



- 
- Dramatically lower cost, non-polluting and safe power available 24/7 from a novel, proprietary energy generation technology.
  - Stationary, motive or motive to stationary applications.

November 2016  
[www.brilliantlightpower.com](http://www.brilliantlightpower.com)

# The Problem

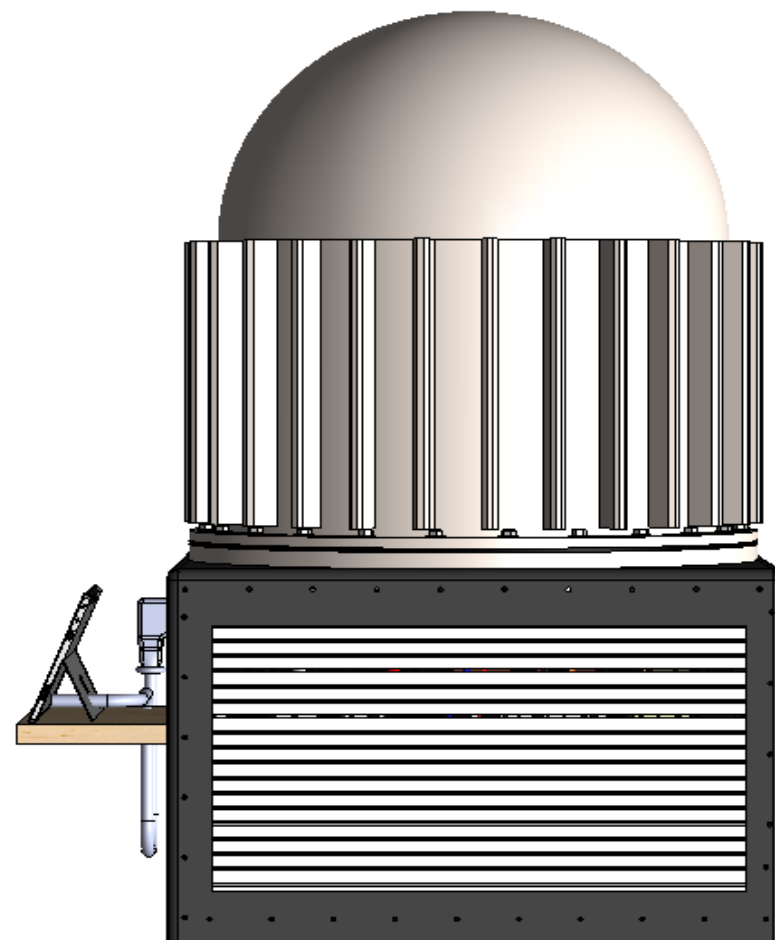
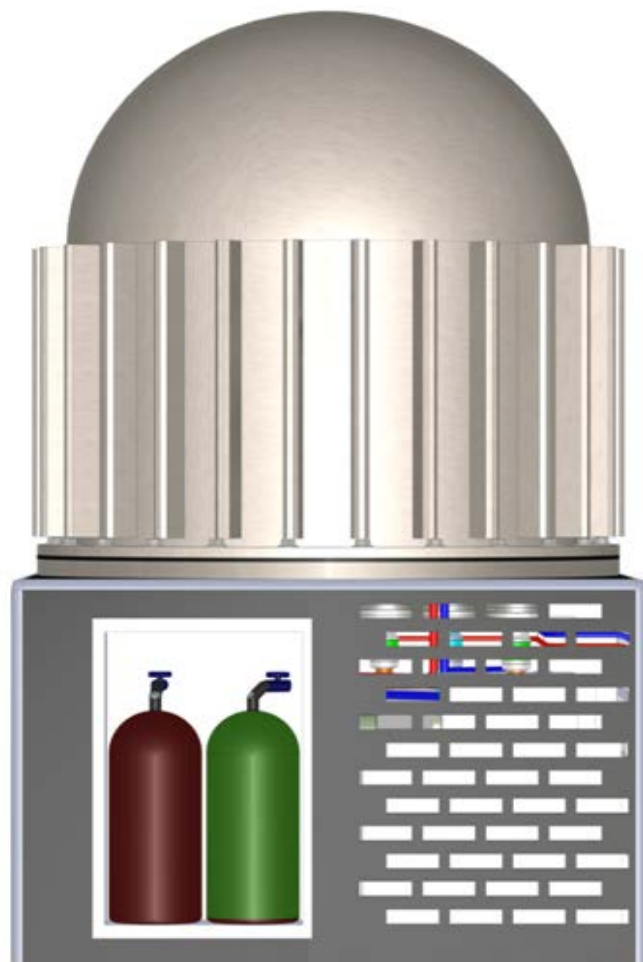


- 39% of global CO2 emissions comes from ***energy-generation***
- EIA projects growth of 43% in global power demand by 2040.
- Despite rapid growth in renewables, by 2040, carbon based fuels will still represent 78% and nuclear 7% of worldwide energy generation.
- 20% of global CO2 emissions comes from ***transportation***
- Tougher emissions regulations encouraging OEMs to invest in electric-mobility, but battery economics are a barrier
- Despite excitement in all-electric vehicles, they account for only 3% of vehicles by 2025
- Nascent global accords to reduce greenhouse gas emissions, targeted CO2 levels and dates for compliance are still too high and potentially too far out to resolve the problem satisfactorily.
- What is needed is cheap, non-polluting, fast, easy to site, globally available, 24/7 power; now.

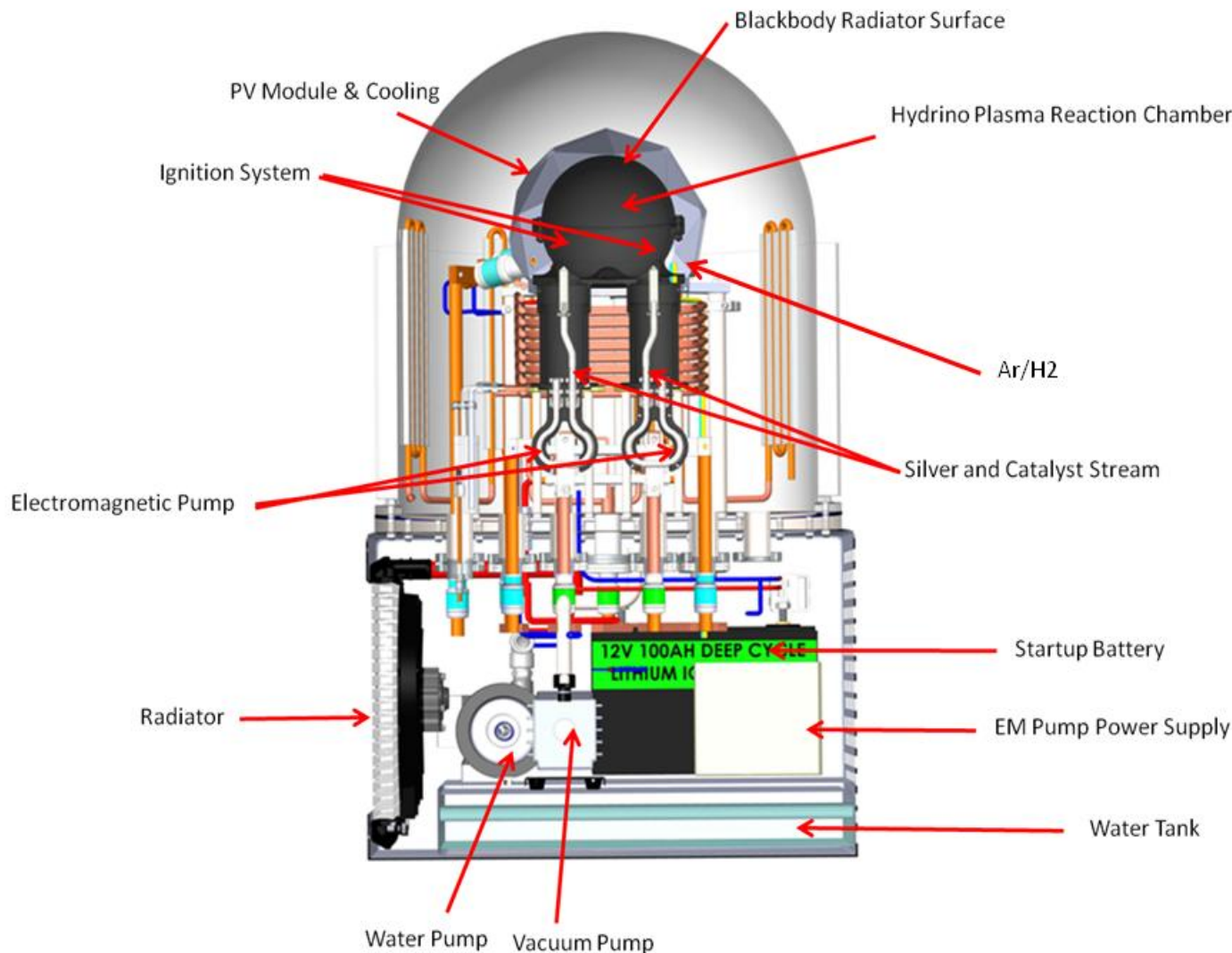
## The Solution: SunCell®

- Proprietary technology: a source of continuous power with an expected capital cost of \$.05 to \$.10/watt at scale.
- Non-polluting: only by-product is a harmless lower energy state of hydrogen called a Hydrino®, already ubiquitous throughout the universe as dark matter.
- Low operating cost: only ongoing input is minimal amounts of water.
- Scalable: 10kW to 100's of MWs.
- Extreme power density: @2-10MW per square meter.
- Can be sited in motive or stationary locations.
- Available commercially @2017.
- Prototype demonstrated January 28, 2016 (<http://brilliantlightpower.com>).

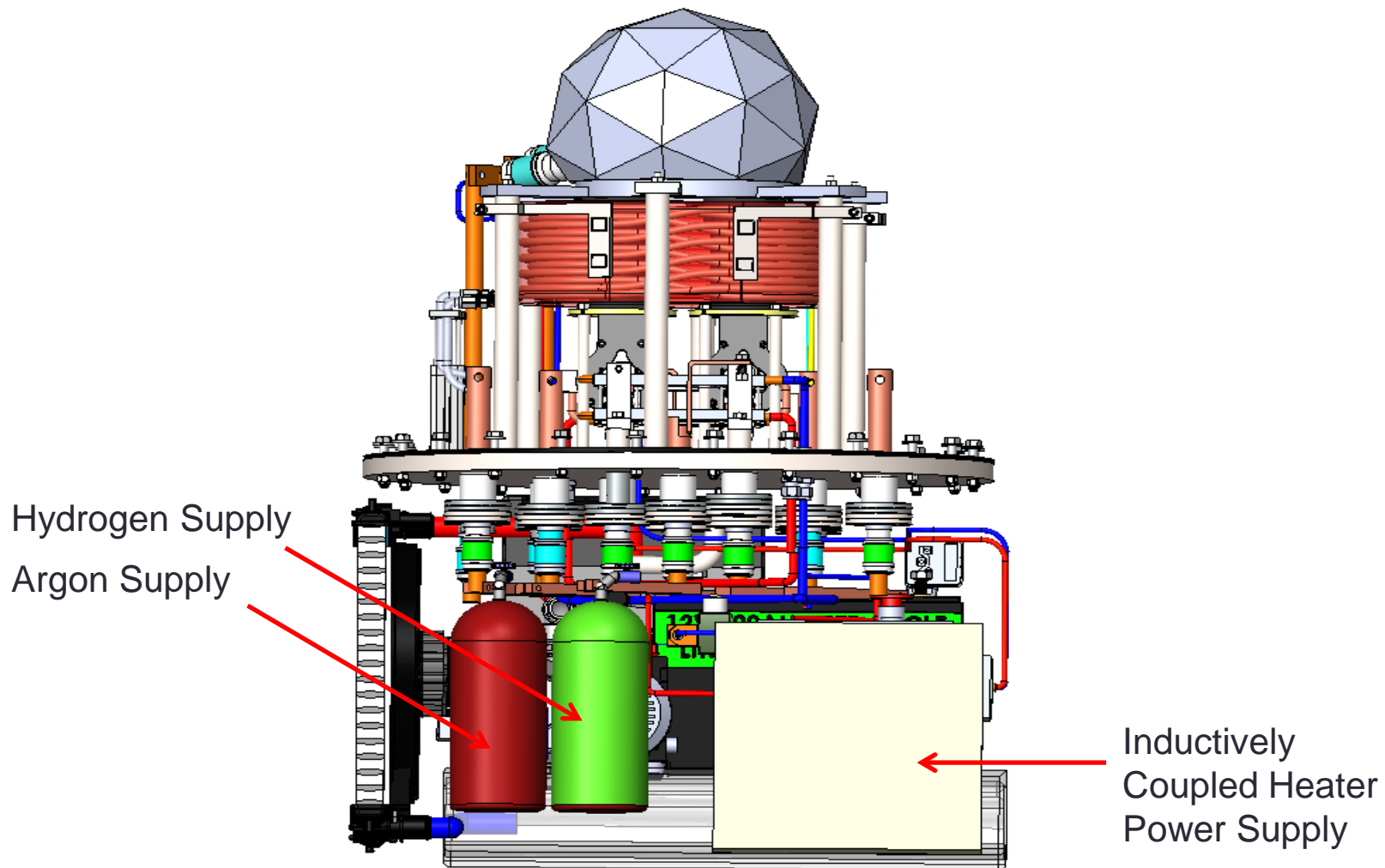
# System Design of SunCell®



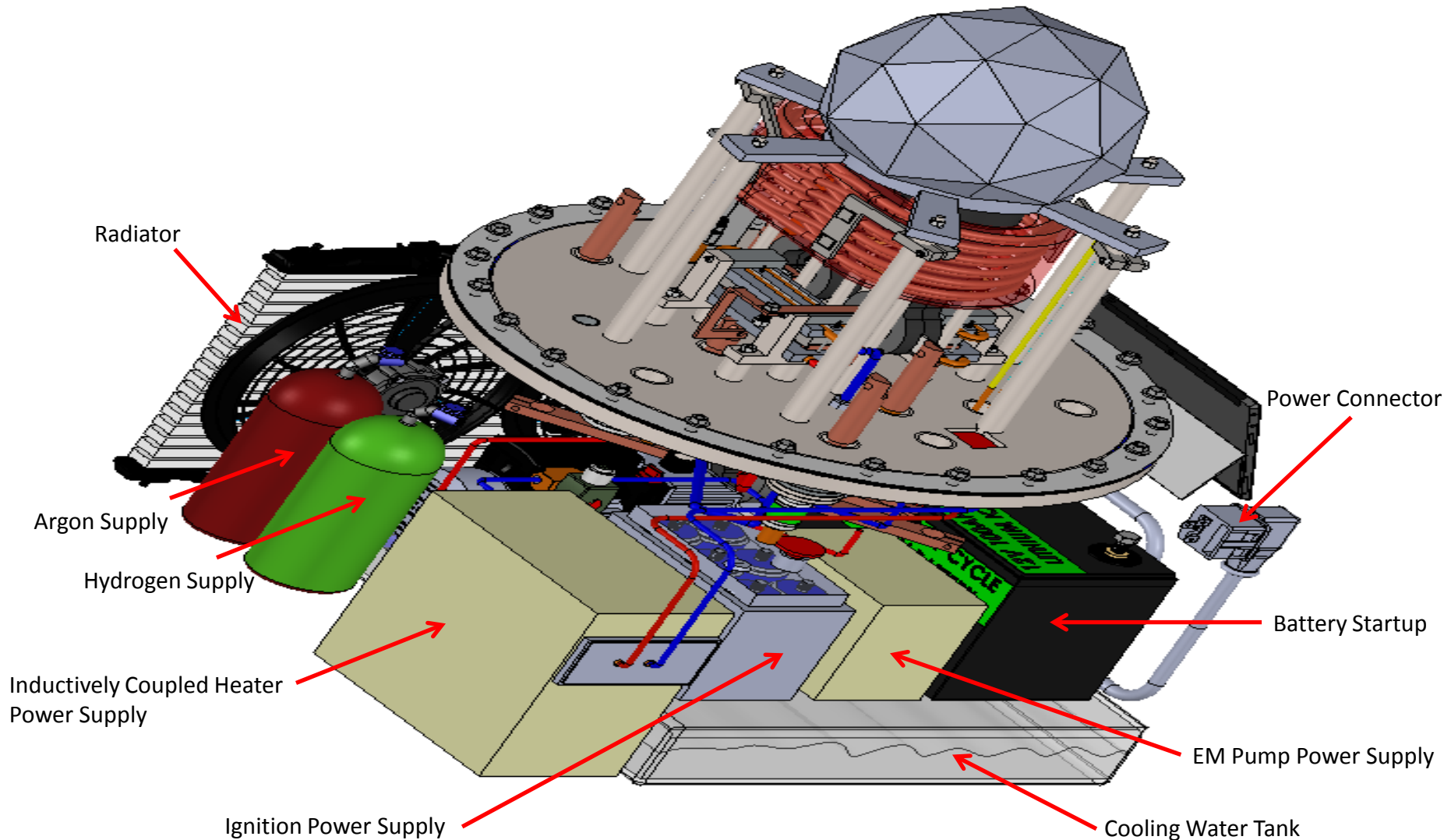
# System Design of SunCell® (cont'd)



# System Design of SunCell® (cont'd)

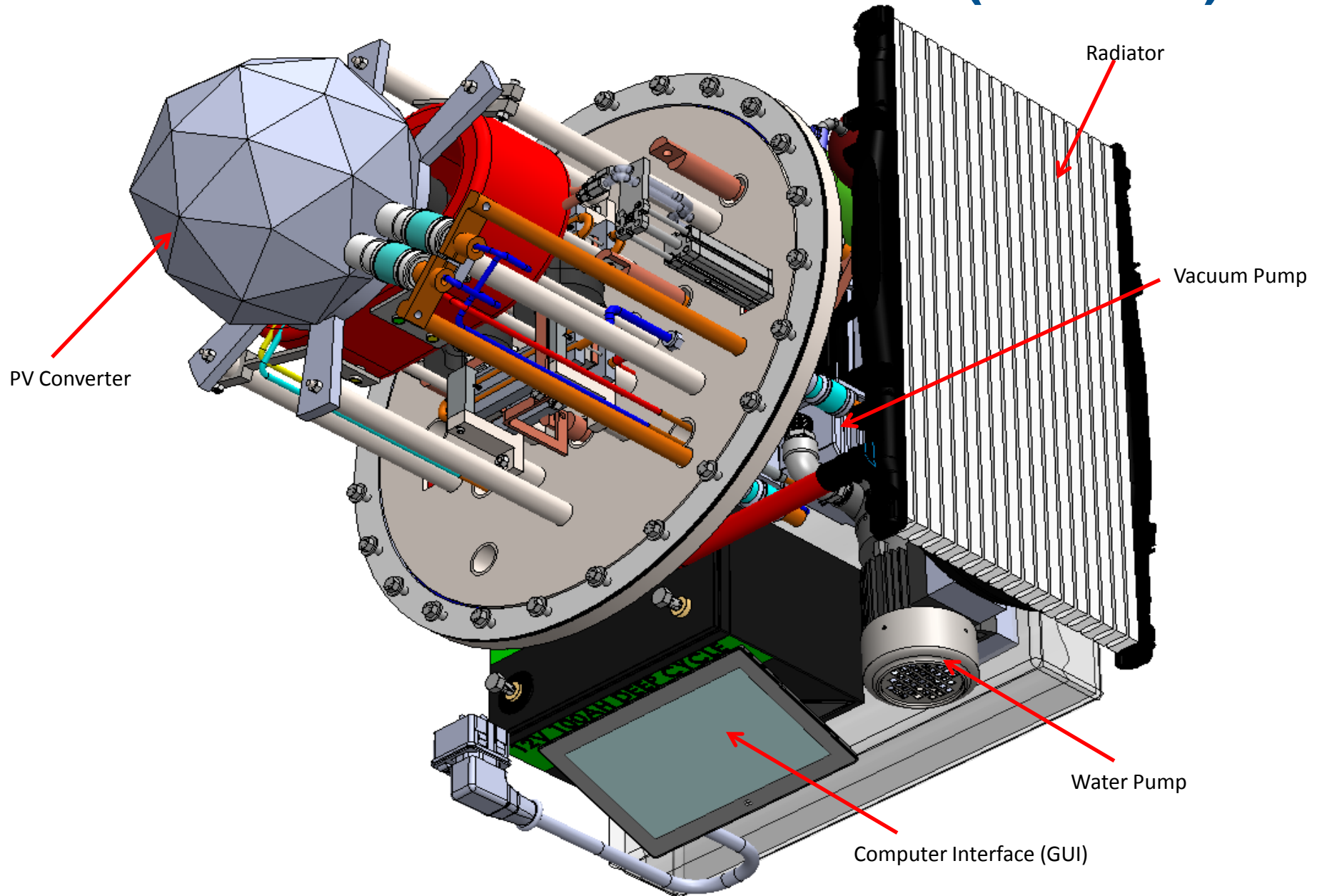


# SYSTEM DESIGN OF SUNCELL® (CONT'D)





# SYSTEM DESIGN OF SUNCELL® (CONT'D)

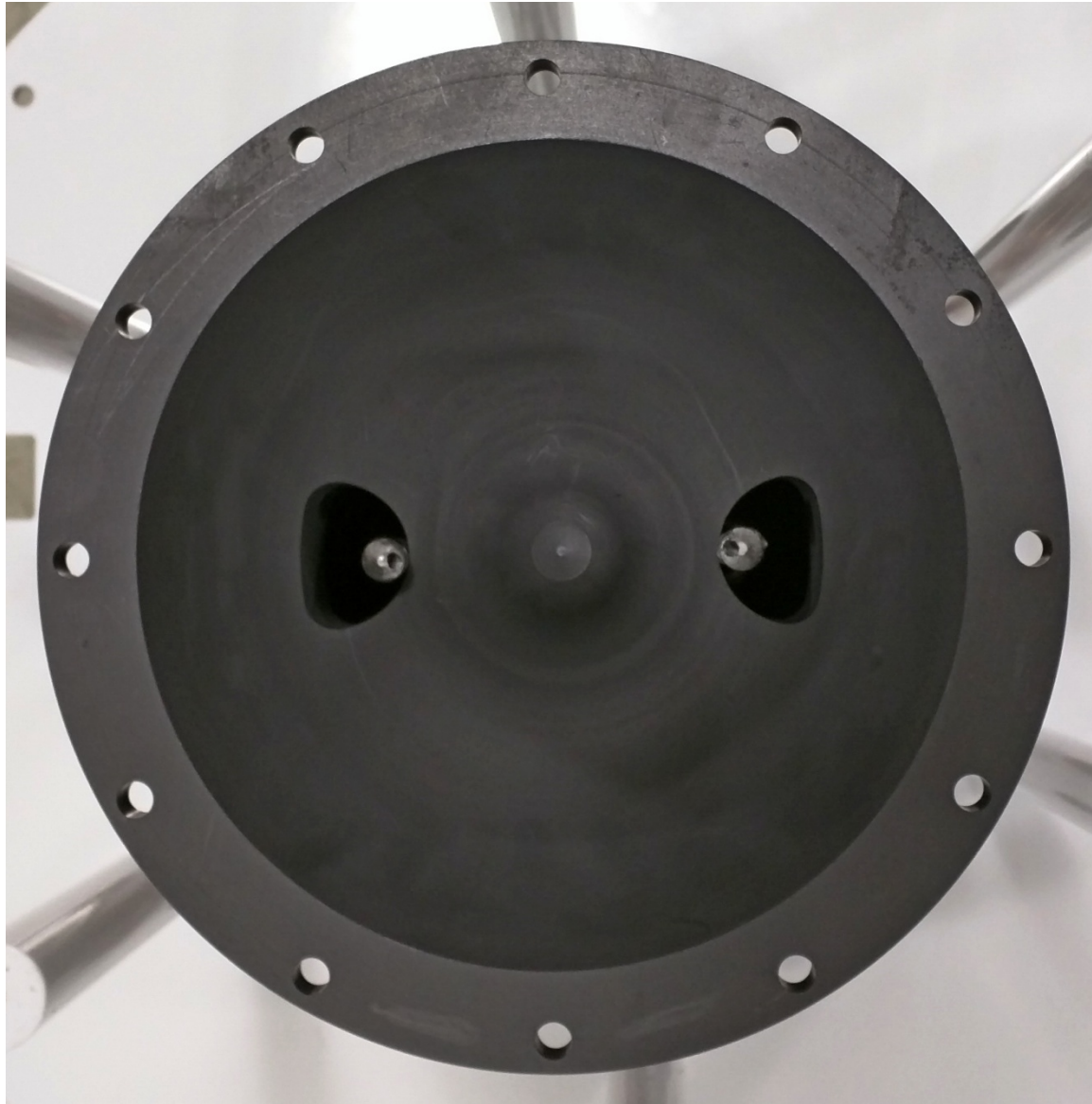




# Commercial SunCell Design

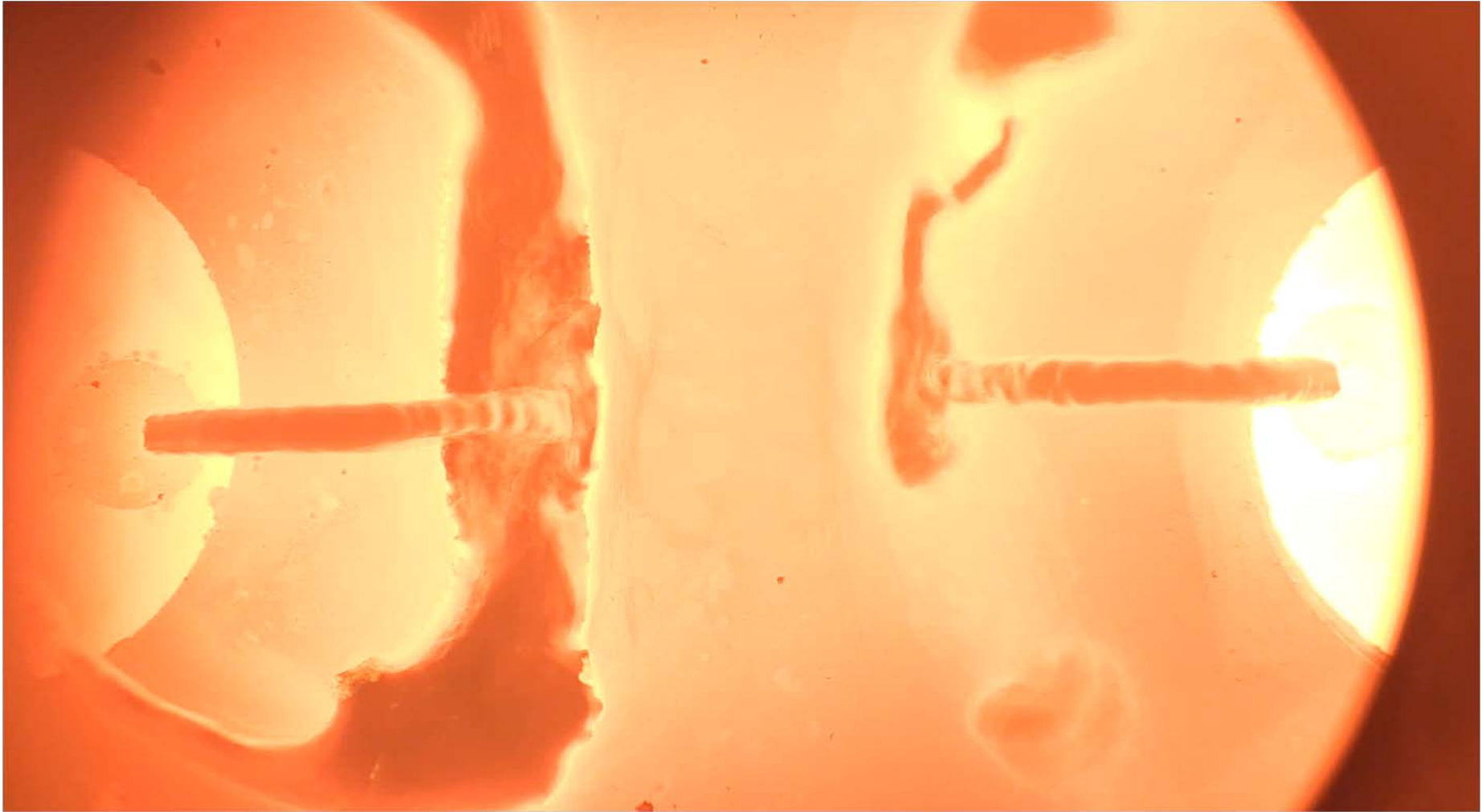


# Commercial SunCell Design (Cont'd)



# Commercial SunCell Test

---



Click the above image to view the video on YouTube:  
<https://www.youtube.com/watch?v=jUBheBH9eio>

# Technology

- The “Blacklight Process” - a chemical reaction that releases the latent energy of the hydrogen atom resulting in a lower energy state called a Hydrino®. <http://brilliantlightpower.com/suncell/>
- During this process, ultraviolet (UV) and extreme ultraviolet light (EUV or “soft x-ray” or “blacklight”) is emitted.
- The UV and EUV light is converted to a visible light that matches the Sun’s spectrum, except at thousands of times the intensity of the sunlight that reaches the earth’s surface. <http://brilliantlightpower.com/plasma-video/>
- Commercially available photovoltaic cells then convert this visible light at @30-40% efficiency into electricity.
- The only inputs are minute amounts of water and silver (silver is reused indefinitely).

## Technology (cont'd)

- Most of the R&D is over - @ 25 years and \$100MM already invested in technology, patents and business development.
- Dr. Mills' Grand Unified Theory of Classical Physics is the basis for the technology. <http://brilliantlightpower.com/theory-overview/>
- Patents filed worldwide that protect the light source generation ("Blacklight Process") and the SunCell® engineering. Finnegan, Henderson is IP counsel.
- Patents filed worldwide that protect a novel photovoltaic conversion process enabling higher efficiency conversion of the EUV light spectrum.
  - Enabling BrLP to not only have a proprietary source of light, but also a proprietary conversion methodology.



# Global Established Accessible Market with Expansion Opportunities

- Reinvent electrification as autonomous, completely off grid, mass produced personal power.
- Flat per diem lease charge with no metering.
- Using cell redundancy being off grid is much cheaper than any grid connection and avoids all related utility regulatory leverage.
- Behind the meter during a short temporary learn out phase in the United States, then global push.



# Business Model

- Lease SunCell® for various applications at a per diem rate equivalent to about \$.05/kWhDC and \$.06/kWhAC
- Applications:
  - Motive power: Auto, truck, boat, plane, train etc.
  - Stationary power: distributed and central locations: 10kW - 100s' MW
  - Motive to Stationary: Dual purpose motive- transportation and power
- Outsource production of SunCell®; including supply chain, manufacture, install and maintenance.
- Outsource production of photovoltaic converter
- Next generation PV and IP development for direct EUV and UV conversion contracted to leading academics.



# Contact

Dr. Randell Mills

[rmills@brilliantlightpower.com](mailto:rmills@brilliantlightpower.com)

609-490-1090